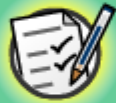


$$5 \times 7 = 35$$
$$20 + 2 = 22$$

Measuring Units



Common core icons



This icon indicates a slide where the Standards for Mathematical Practice are being developed. Details of these are given in the Notes field.



Slides containing examples of mathematical modeling are marked with this stamp.



This icon indicates an opportunity for discussion or group work.

The **Standards for Mathematical Practice** outlined in the Common Core State Standards for Mathematics describe varieties of expertise that mathematics educators at all levels should seek to develop in their students.

These are:

- 1) **Make sense of problems and persevere in solving them.**
- 2) **Reason abstractly and quantitatively.**
- 3) **Construct viable arguments and critique the reasoning of others.**
- 4) **Model with mathematics.**
- 5) **Use appropriate tools strategically.**
- 6) **Attend to precision.**
- 7) **Look for and make use of structure.**
- 8) **Look for and express regularity in repeated reasoning.**



This icon indicates that the slide contains activities created in Flash. These activities are not editable.



This icon indicates teacher's notes in the Notes field.

Can you think of any units for measuring length?

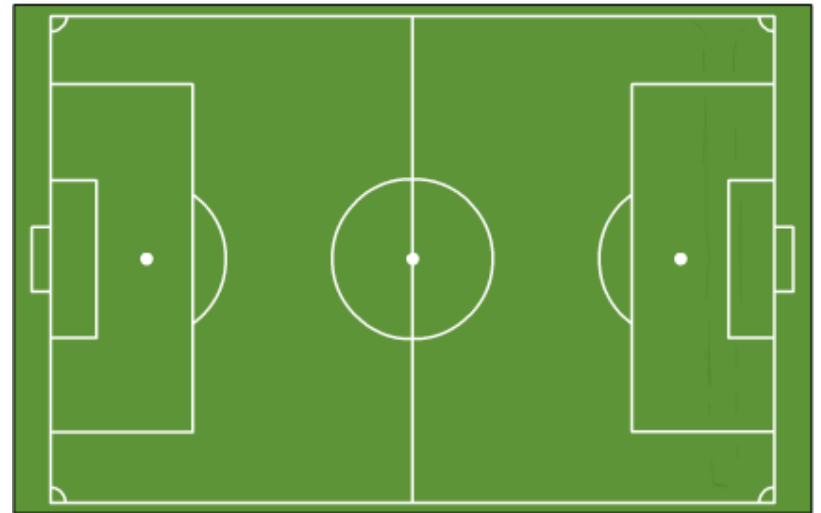


The bee is 1 **centimeter** long.



Nicole is 4 **feet**
and 6 **inches** tall.

A soccer field is 115 **yards** long.





There are two main measurement systems:
metric and **standard** (also called imperial).

Do you know which unit belongs
to which system?

Drag each measurement unit to
the correct box.

Press **start** to begin.

start



Which unit?



Inches, centimeters and millimeters are more accurate when measuring the length of small objects. Feet, yards and meters are more accurate when measuring longer objects.

Decide which unit you would use to measure each object.

Press **start** to begin.

start



Comparing measurements



Alex likes to draw. He drew this picture of a sheep that is 1 **inch** long. Use the ruler tool to find out how many **centimeters** long it is.



Match the equal measurements to
make four pairs.

Press **start** to begin.

start



Estimating lengths



This ruler is 12 inches long.

Can you estimate the length of this snail in inches?





Adding and subtracting lengths

We can add and subtract measurements to find the sums and differences of two lengths.
Press the buttons to see how to solve sums and differences involving lengths.

Problem 1

Problem 2

Problem 3

