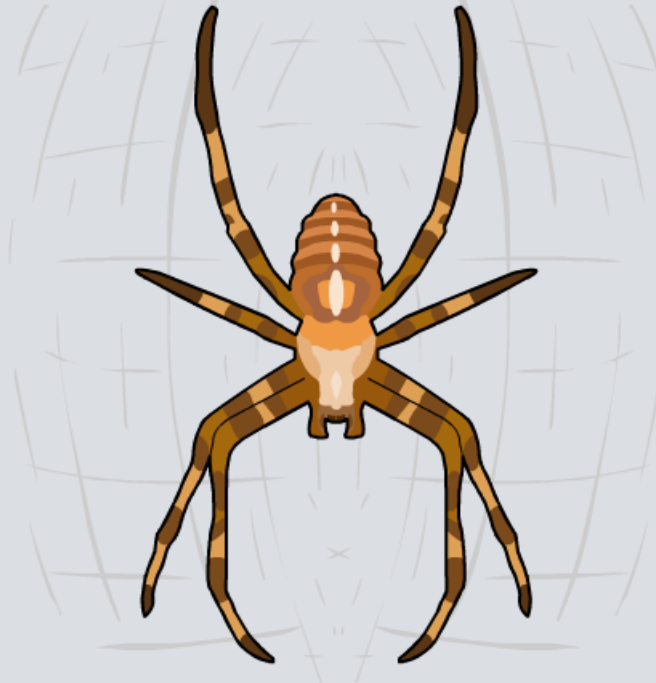
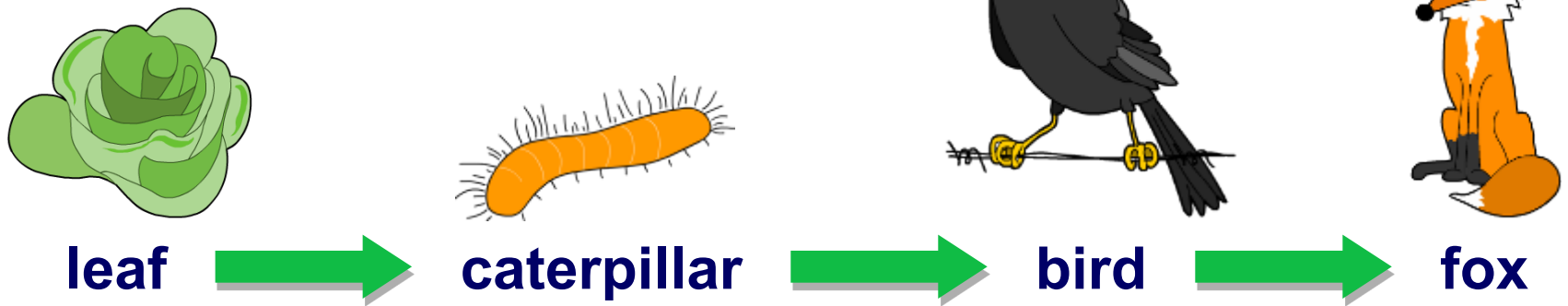


Food Webs



A food chain is a sequence which shows how each individual feeds on the organism below it in the chain. Each arrow means “eaten by”.



What does this food chain show?

A leaf is eaten by a caterpillar, which is then eaten by a bird, which is then eaten by a fox.

Energy is transferred from one organism to another in the direction of the arrow.



Primary, secondary or tertiary?

What is the feeding type of each organism?



tree



moth



blue tit



owl

?

?

?

?

producer

?

C

solve

↶

What is a food web?

Why is it a good idea for an organism to have different sources of food? Animals usually eat many different things and are involved in lots of different food chains:

plants → aphid → ladybug → blue bird → owl

plants → moth → blue bird → owl

plants → mouse → weasel

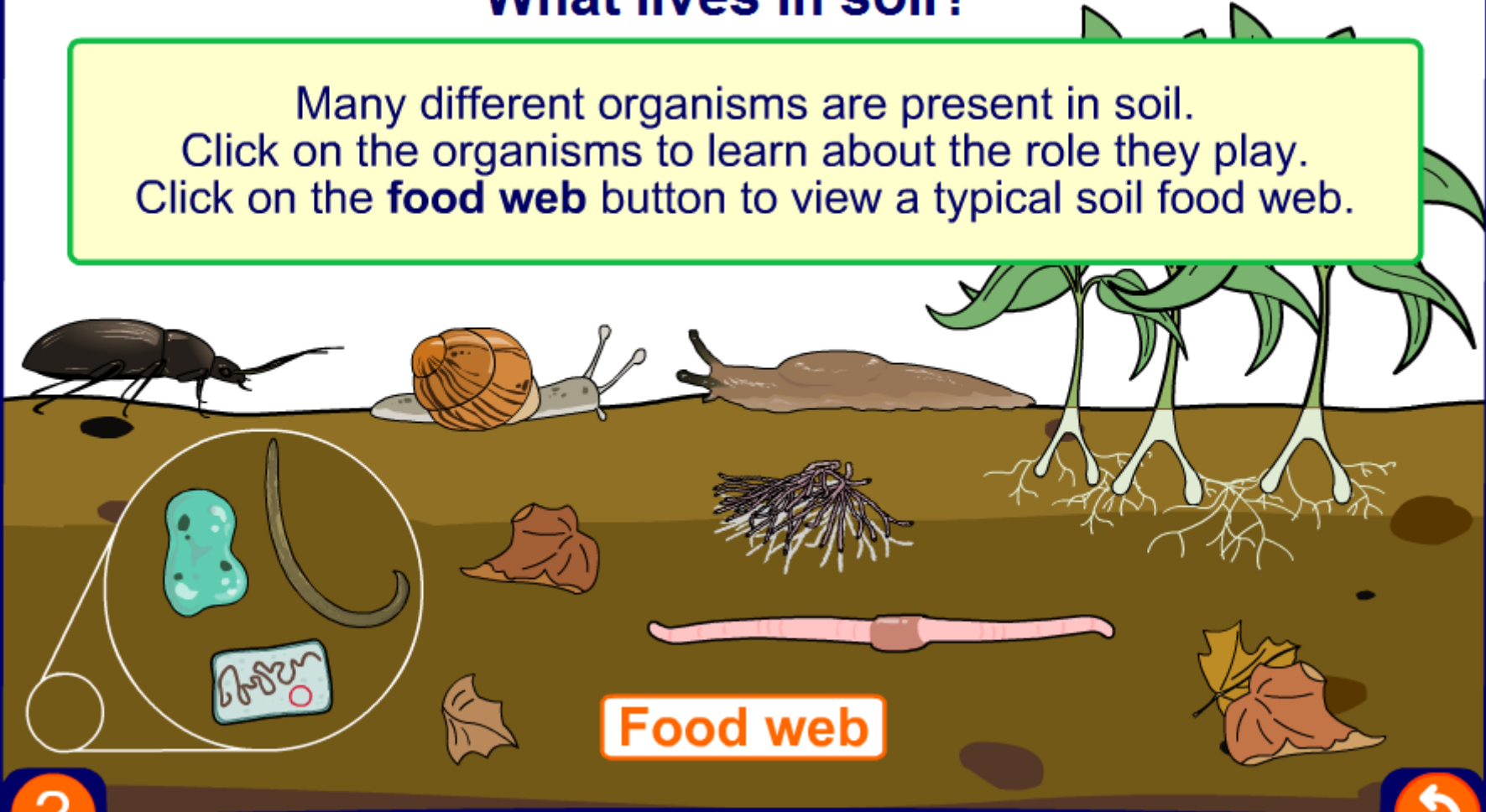
plants → mouse → owl

These food chains can be put together in a **food web**, which shows how the food chains are connected.

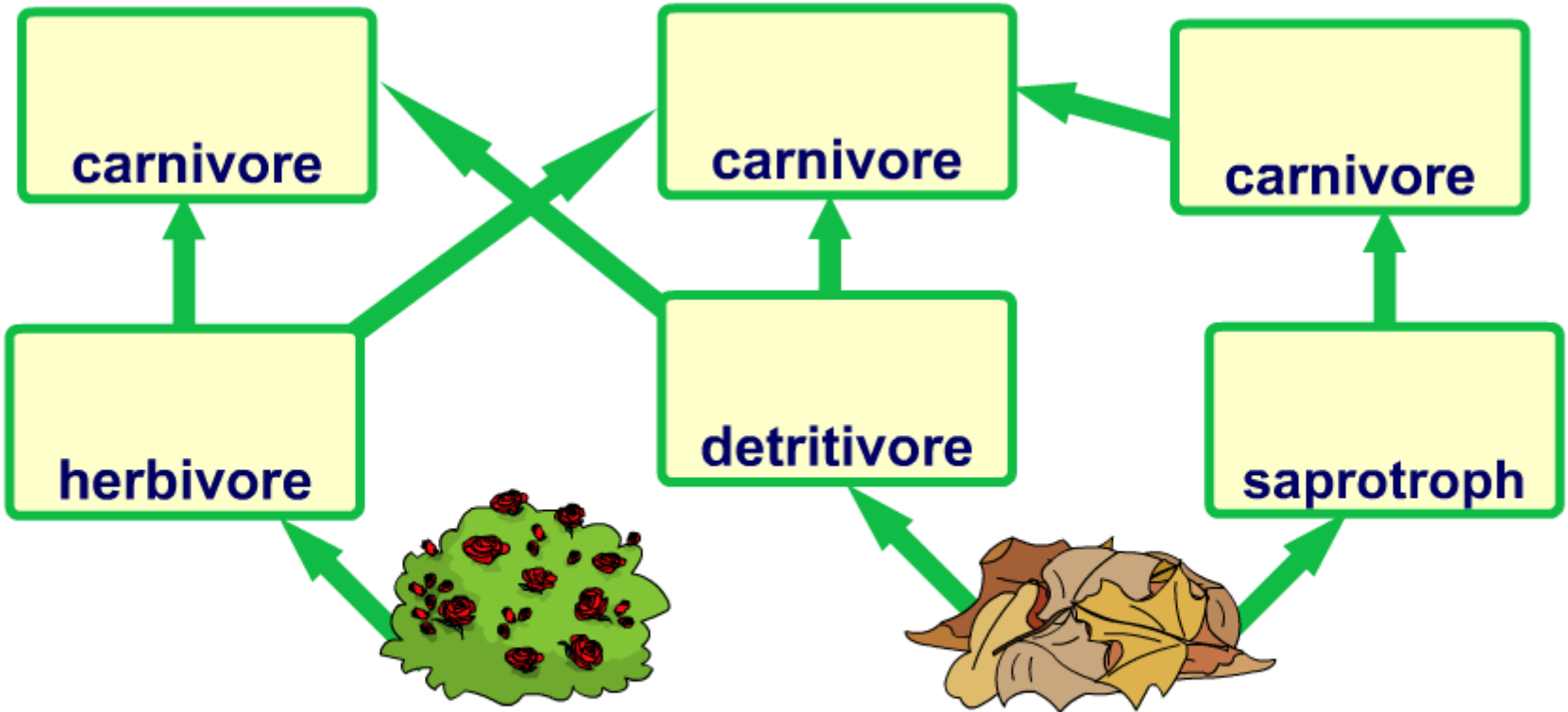
What would the food web for these food chains look like?

What lives in soil?

Many different organisms are present in soil.
Click on the organisms to learn about the role they play.
Click on the **food web** button to view a typical soil food web.



Drag the animals to the correct place in the food web



solve

