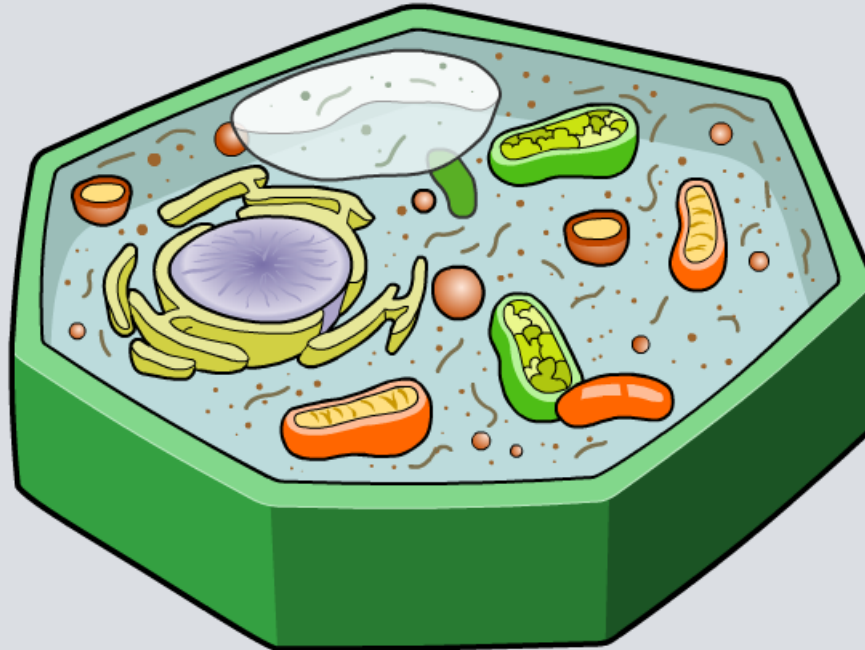


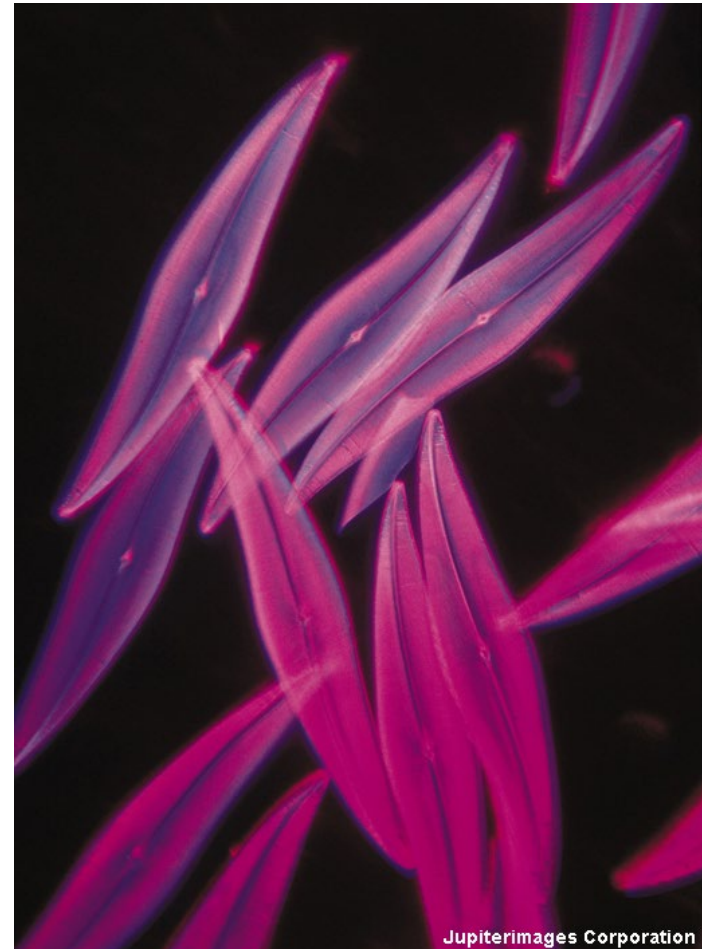
Organelles



What is a cell?

A **cell** is the basic unit of life, from which larger structures such as tissue and organs are made.

- **Unicellular** organisms, such as bacteria, consist of just a single cell.
- **Multicellular** organisms consists of many cells – humans are made from an estimated 50 trillion cells!

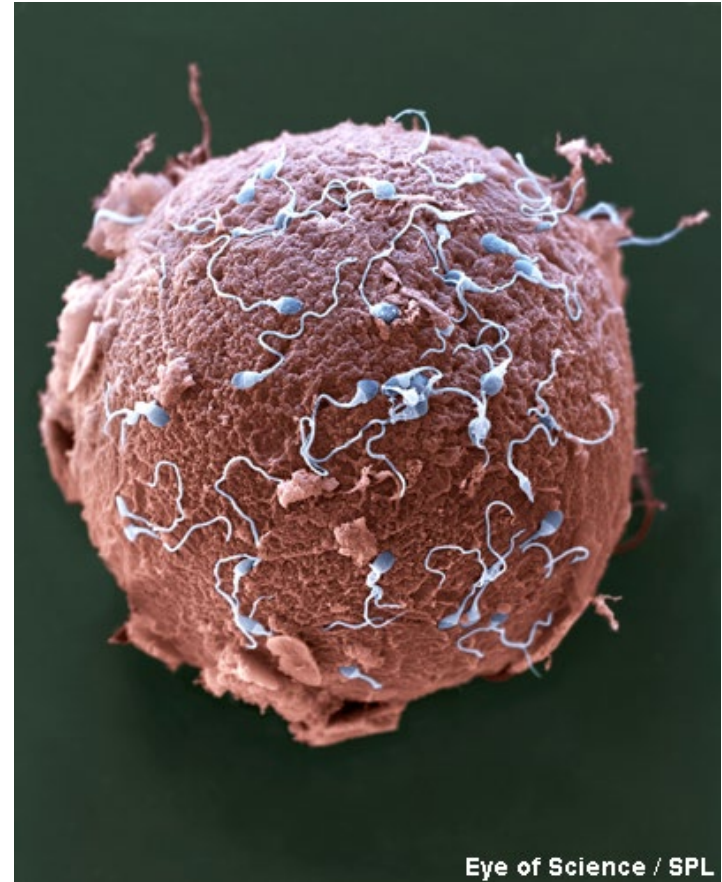


How big is a cell?

Most plant and animal cells are between $10\ \mu\text{m}$ and $100\ \mu\text{m}$ in size – around half the diameter of a human hair – and too small to see without a microscope.

The largest cell in the human body is the female egg cell, (ovum) at around $100\ \mu\text{m}$ in diameter.

The smallest human cell is the sperm cell – the head is around $5\ \mu\text{m}$ long.



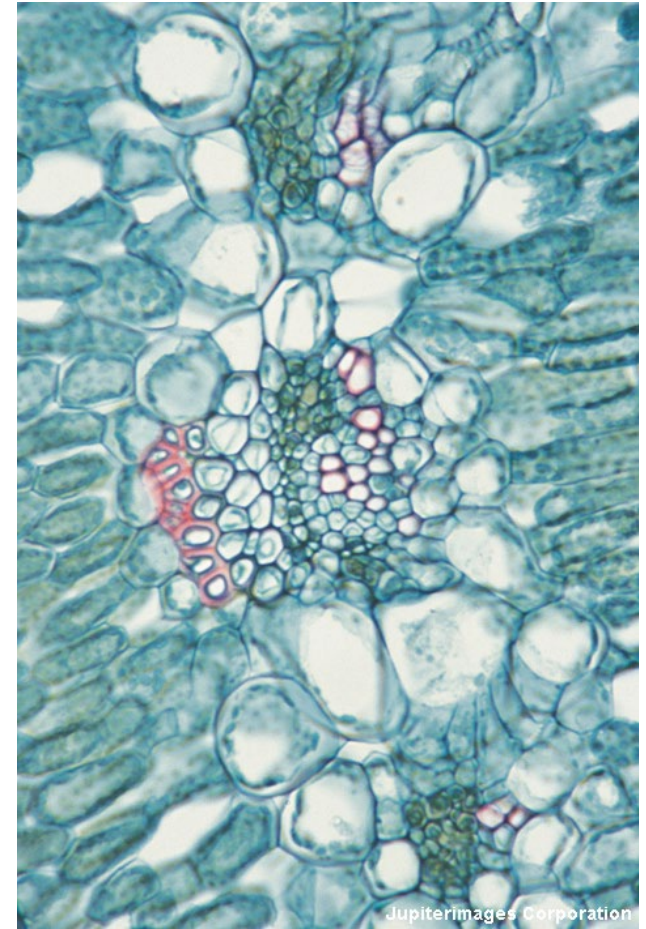
Eye of Science / SPL

Most plants and animals are multicellular. The human body is made up of around 200 different types of cell, all working together.

Most cells are specialized, meaning that each type of cell has a specific structure and function.

All cells with a nucleus contain the same genes, but different cells activate different genes so they only produce the proteins they need.

However, all cells have certain common features and structures called **organelles**.

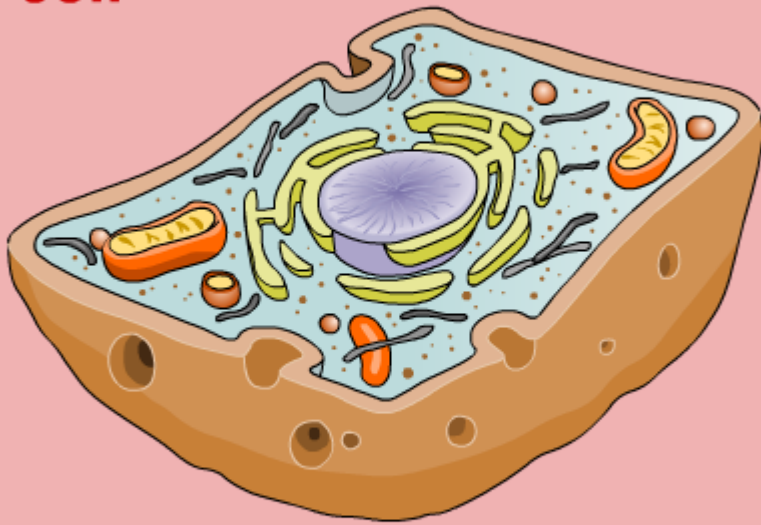


What do cells contain?

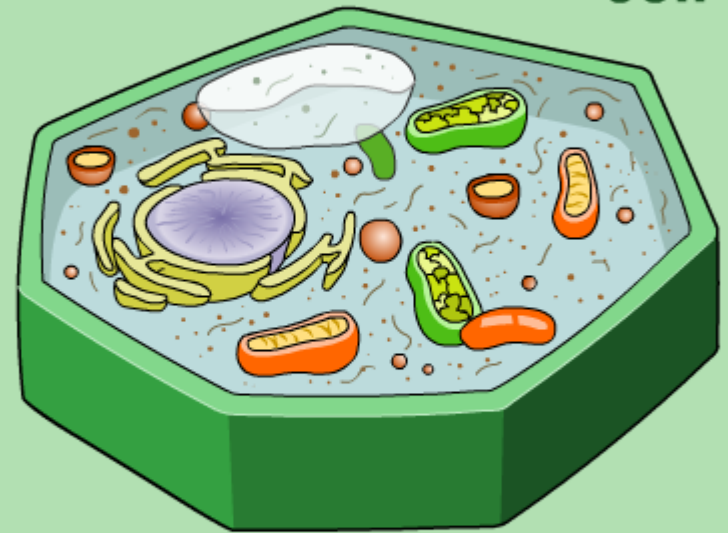


What do animal and plant cells contain?

animal
cell



plant
cell



Are these organelles found in animal or plant cells?

animal and plant cells

plant cells only

cell membrane



solve



Exploring animal cells



Exploring plant cells

