

The background of the slide is a detailed illustration of a school desk. On the left, a brown book is partially visible. In the center, a large sheet of white lined paper is spread out. On the right, a spiral-bound notebook with a yellow cover is open, showing a yellow sticky note with the words "Home" and "read" written in red. A yellow pencil with a red eraser and a sharpened lead tip lies horizontally across the bottom of the lined paper. On the left side of the desk, there are some yellow pencil shavings and a small pile of black dust.

## Vocabulary





This icon indicates that the slide contains activities created in Flash. These activities are not editable.



This icon indicates that a slide contains audio.



This icon indicates coverage of the Language Standards.



This icon indicates that a worksheet accompanies the slide.



This icon indicates teacher's notes in the Notes field.



This icon indicates an opportunity for collaboration or group work.

## College and Career Readiness Standards for Language:

4. Determine or clarify the meaning of unknown and multiple-meaning words and phrases by using context clues, analyzing meaningful word parts, and consulting general and specialized reference materials, as appropriate.
6. Acquire and use accurately a range of general academic and domain-specific words and phrases sufficient for reading, writing, speaking, and listening at the college and career readiness level; demonstrate independence in gathering vocabulary knowledge when considering a word or phrase important to comprehension or expression.

# Crafting definitions



# Definition strategies



Context clues can tell you a great deal about a word even without breaking the word into parts or using a dictionary.

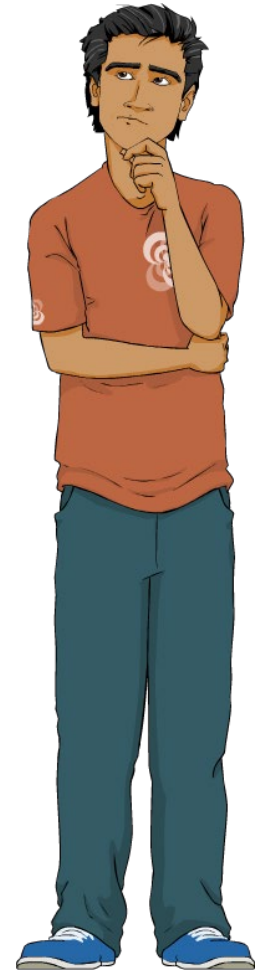
“I do not wish to \_\_\_\_\_, but to live.”

– *Ralph Waldo Emerson*

What is the part of speech of the missing word?

Does the missing word have negative or positive connotations?

What word or words in the sentence give you an idea of its meaning?



“I do not wish to expiate, but to live.”

– *Ralph Waldo Emerson*

Based on contextual clues, can you suggest some words that might fill the blank?

The correct word is “expiate,” which means to atone for something about which one feels guilty.

Although you may not have suggested this exact word, your suggestions were probably all verbs with negative connotations.

Even without knowing the word, you were able to deduce its significance and, more importantly, the general meaning of the sentence.





Breaking a word apart can help you determine what part of speech the word is.

Look at these common **suffixes** (endings) for nouns, verbs and adjectives.

Adjectives	Nouns	Verbs
-able -our -al -y -ary -ful	-age -hood -cian -ion -ence -ism -er -st -ess -ship	-ize/ise -ate

Consider the words analyze, analyst and analytical. Use the table to determine the part of speech for each word.



# Using prefixes





# Using suffixes



# Using dictionaries



# Definition practice

