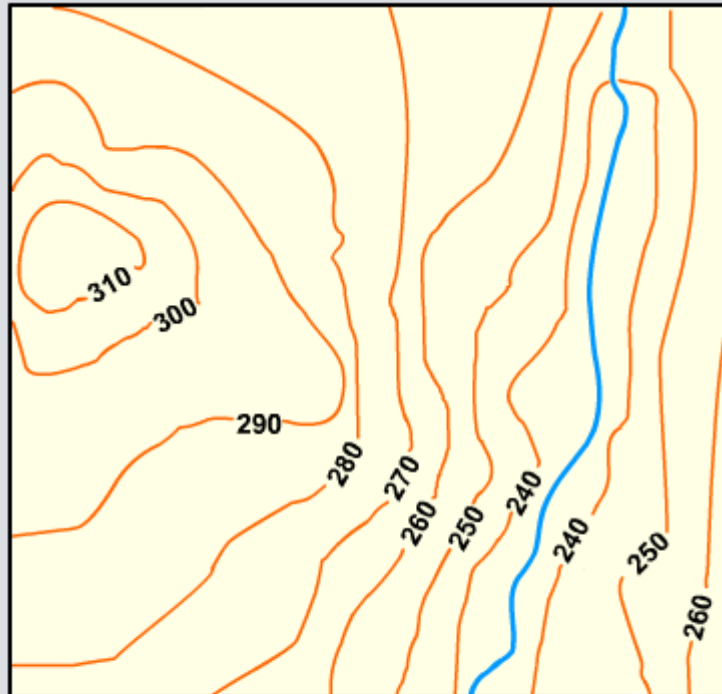


Relief



Relief is the term geographers use to refer to the height and shape of the land.



How would you show the relief of these landscapes on a map?

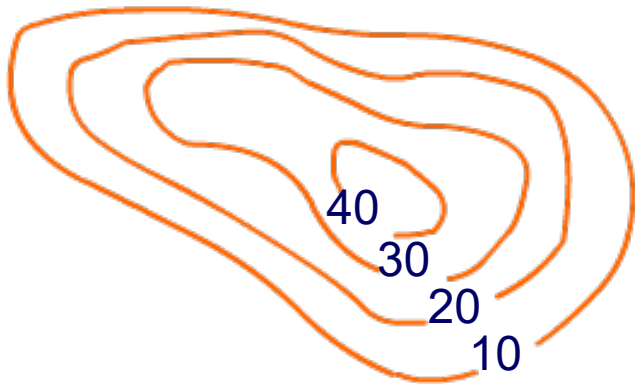
How many different ways can you think of to show relief?



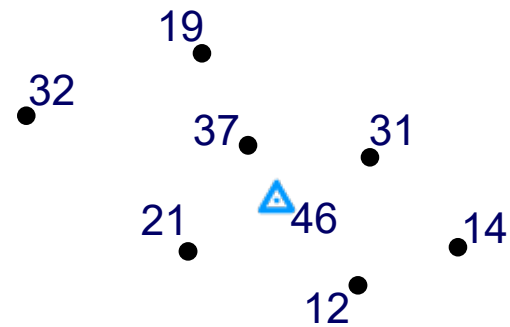
How is relief shown on a map?

Relief is shown on maps in three main ways:

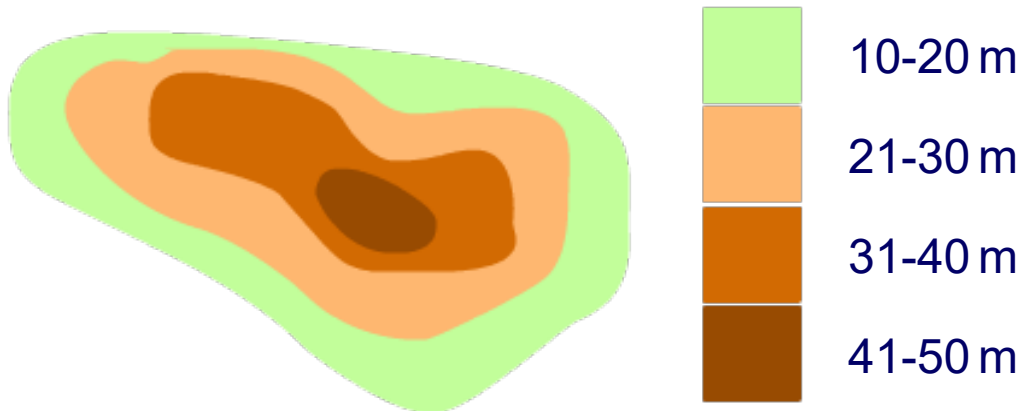
- contour lines



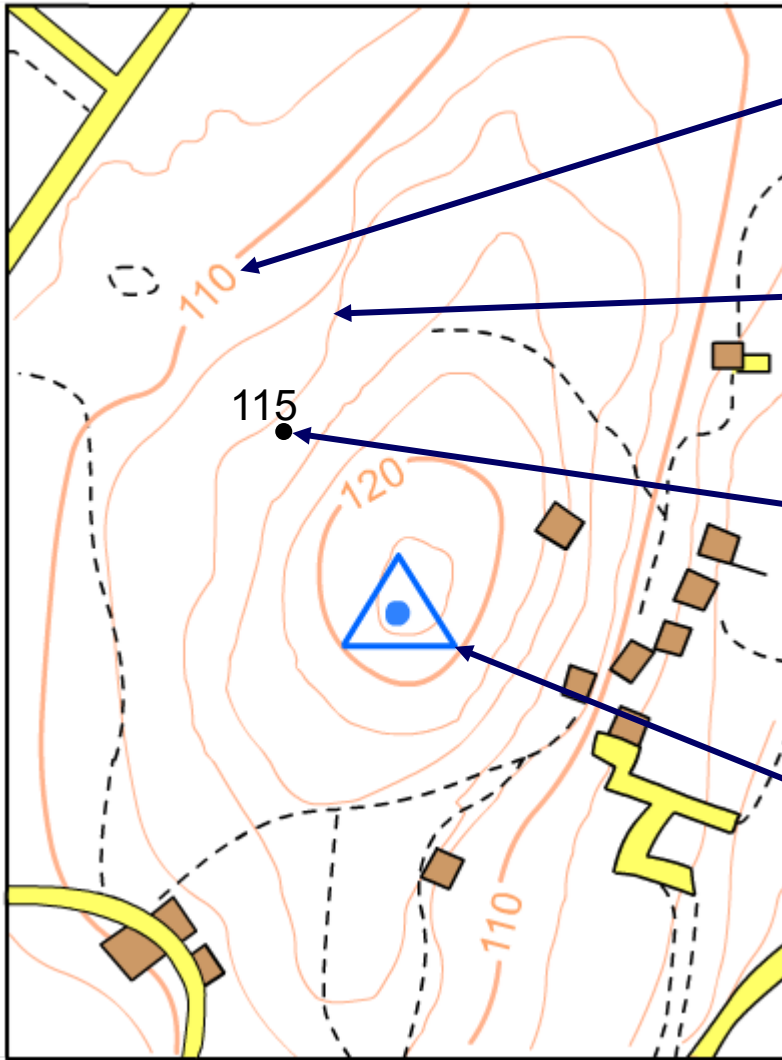
- spot heights



- color shading.



Ways to show relief



height in meters above sea level.

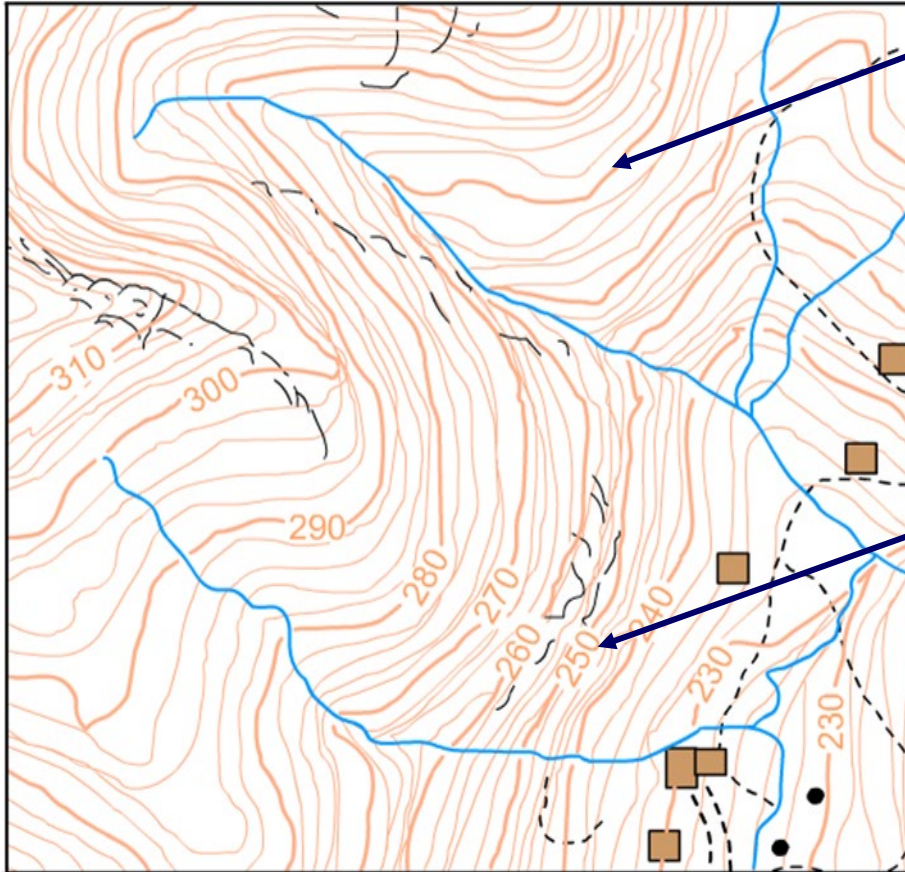
contour line – joins points of equal height.

spot height – represents the height of the land at a given point.

triangulation pillar – concrete post used by surveyors.



Relief is often shown on maps by light brown/orange lines known as **contour lines**.



Contours are lines that join points of equal height.

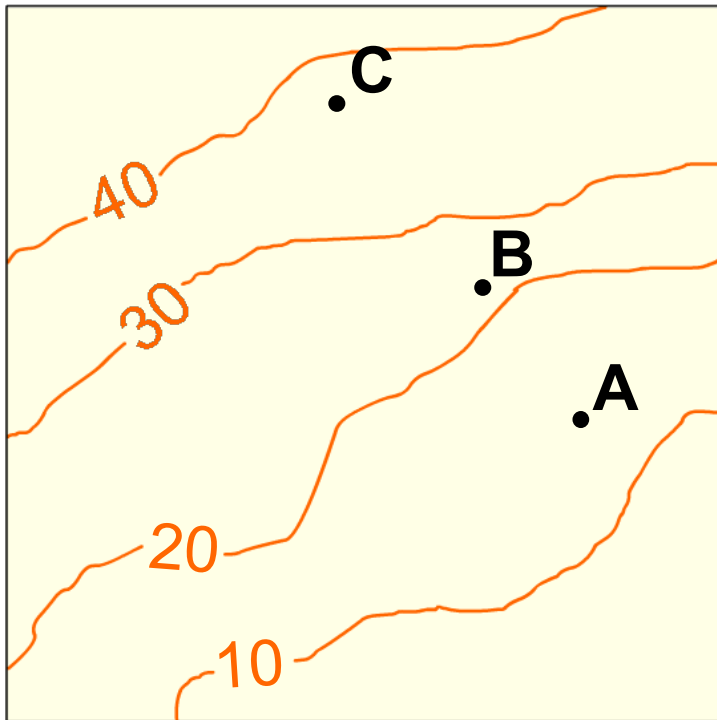
Contour lines usually have a number attached to them. This number indicates height above sea level.



Drawing contours



Contours are equally spaced in a vertical direction. The equal distances between the contours are called **intervals**.



The intervals on this diagram are 10m.

How can you find out the height of a point between contours?

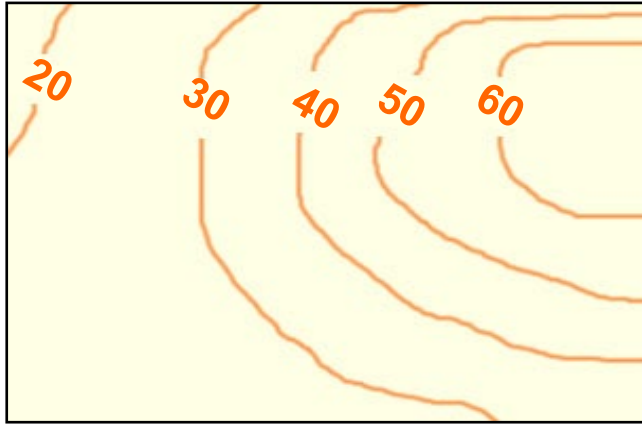
Which point is 15m high? **A**, **B** or **C**?

A could be at a height of 15 m.

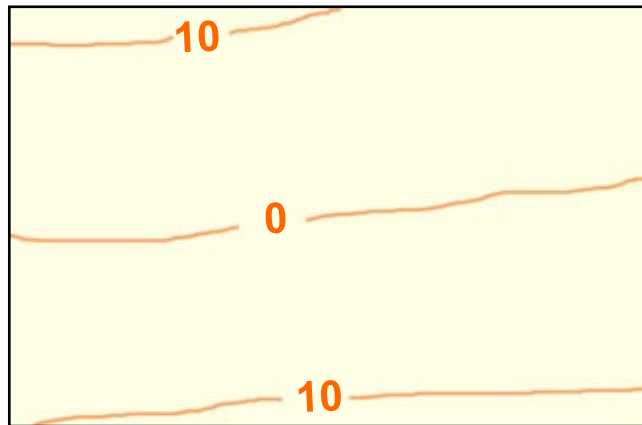
What height would points **B** and **C** be?

Steep slopes and gentle slopes

Contours are useful. They tell us about the shape of the land without needing to see it.



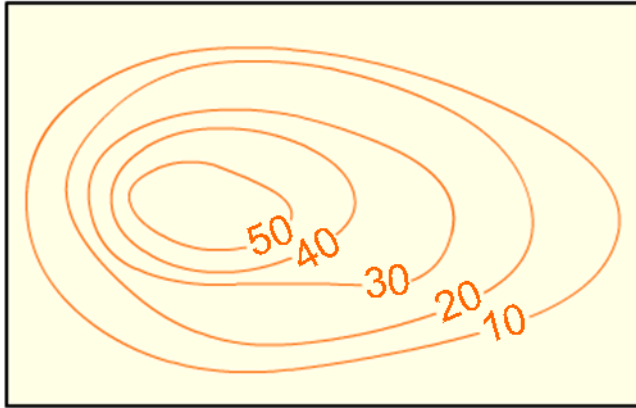
When contours are close, the land is steep.



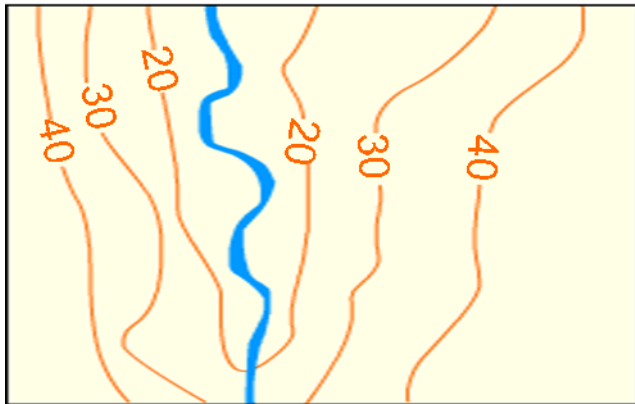
When contours are far apart, the slope is gentle.



A map's contour lines produce patterns that indicate particular landscape features:



Contours in this formation indicate a hill.



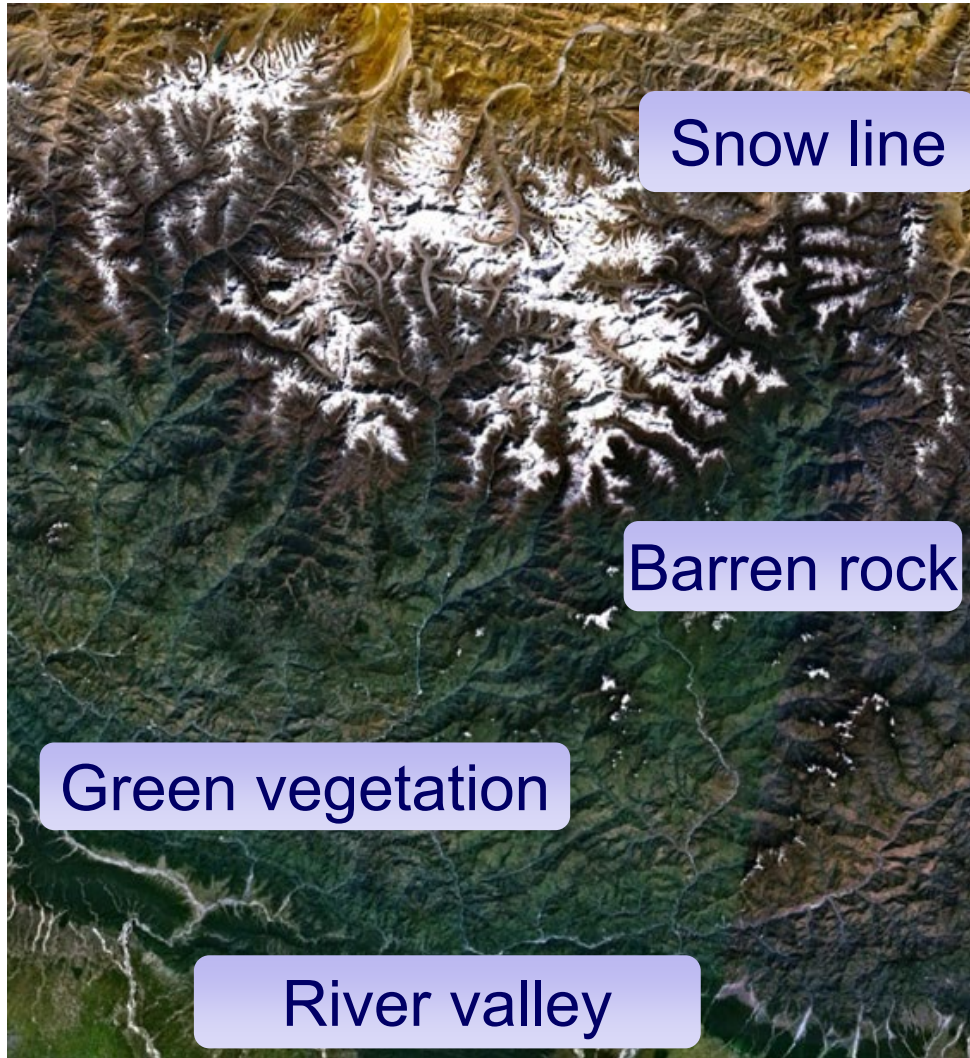
Contours in this formation indicate a river valley.



Labeling landscapes



Using color to show relief



Examine this satellite image of Mount Everest.

How can you tell which areas are higher than other areas?

The colors of the landscape produce a distinct pattern which helps us to understand the relief of the area.



Using color to show height on a map

